

# TRUCKER SERIES



The Trucker Series of ladders are ideal for the construction, manufacturing, energy, and service industries, as they help increase worker efficiency and add safety to daily operations. The Trucker Series of ladders are ANSI (American National Standard Institute) tested & rated, compact in design and fit most truck trailers.

## TRUCKER I

#6900

- All Aluminum, Lightweight Construction, Weighing 22 lbs
- Top-Tier **ANSI Rated - 375 lb.** (Special Duty Rating)
- Designed to assure **3-Points-of-Contact** by providing (2) folding handles
- Aggressive, Slip-Resistant Step Treads
- Will Mount on the Rub Rail or Stake Pockets of most trailers.
- Dimensions (In-Use w/Handle) 21" W x 71" L
- Powder Coat finishes are available
- Storage Options Available



## DROP DECK TRUCKER

#6400

- All Aluminum, Lightweight Construction, Weighing 15 lbs
- Top-Tier **ANSI Rated - 375 lb.** (Special Duty Rating)
- Designed to assure **3-Points-of-Contact** by providing (2) folding handles
- Aggressive, Slip-Resistant Step Treads
- Will Mount on the Rub Rail or Stake Pockets of most trailers.
- Dimensions (In-Use) 21" W x 64" L
- Powder Coat finishes are available
- Storage Options Available



## ROLL TARP TRUCKER

#6910

- All Aluminum, Lightweight Construction, Weighing 22 lbs
- Top-Tier **ANSI Rated - 375 lb.** (Special Duty Rating)
- Designed to assure **3-Points-of-Contact** by providing (2) folding handles
- Aggressive, Slip-Resistant Step Treads
- Will Mount on the Rub Rail or Stake Pockets of most trailers.
- Dimensions (In-Use w/Handle) 21" W x 71" L
- Powder Coat finishes are available
- Storage Options Available



## 4 STEP TRUCKER

#6934

- All Aluminum, Lightweight Construction, Weighing 25 lbs
- Top-Tier **ANSI Rated - 375 lb.** (Special Duty Rating)
- Designed to assure **3-Points-of-Contact** by providing (2) folding handles
- Aggressive, Slip-Resistant Step Treads
- Will Mount on the Rub Rail or Stake Pockets of most trailers.
- Dimensions (In-Use): 21" W x 79" L
- Powder Coat finishes are available



## UTILITY TRUCKER

#6950

- All Aluminum, Lightweight Construction, Weighing 22 lbs
- Top-Tier **ANSI Rated - 375 lb.** (Special Duty Rating)
- Designed to assure **3-Points-of-Contact** by providing (2) folding handles
- Aggressive, Slip-Resistant Step Treads
- Dimensions (In-Use w/Handle) 21" W x 71" L
- Powder Coat finishes are available
- Equipped with steel brackets for permanent placement and pivots 180 degrees for convenient storage



## ECO TRUCKER

#6901

- All Aluminum, Lightweight Construction, Weighing 15 lbs
- Top-Tier **ANSI Rated - 375 lb.** (Special Duty Rating)
- Aggressive, Slip-Resistant Step Treads
- Will Mount on the Rub Rail or Stake Pockets of most trailers.
- Dimensions: 18" W x 43" L x 6" D
- Powder Coat finishes are available



## RAIL CAR LADDER

#9500

- All Aluminum, Lightweight Construction, Weighing 30 lbs
- Features Ladder Levelers to accommodate uneven terrain
- Dimensions (fully extended) 18" W x 76" L



# STORAGE & RACK ALTERNATIVES

## SHELF STORAGE RACK

#6000

The Shelf Storage Rack provides under trailer storage for the Drop Deck, Trucker I, 4-Step Ladder, and Roll Tarp trailer ladders. The Shelf Storage Rack consists of two support arms and a base for mounting to the frame of a flatbed trailer or where space is available. Includes security bar for safety and security.

- All Aluminum
- Dimensions: 12-3/4" W x 18" L x 22" D
- Mounting holes are not pre-drilled
- Mounting hardware is not included
- Combine with a Trucker Series Ladder Product for combo pricing
- Lock is not included



## STEEL BRACKET

#6001

Our Steel Bracket design is your solution to utilizing the Trucker Series of ladders when a trailer does not include stake pockets or rub rail.

- Steel
- 26" L
- Mounting hardware is not included



## UPRIGHT STORAGE RACK

#6005

The Upright Storage Rack is a lockable storage solution for Drop Deck, Trucker I, 4-Step Ladder, and Roll Tarp trailer ladders. This rack bolts to the headboard, headache rack, behind the truck cab, or where space is available. Includes security bar for safety and security.

- All Aluminum
- Dimensions: 16" W x 31" L
- Mounting holes are not pre-drilled
- Mounting hardware is not included
- Lock is not included
- Combine with a Trucker Series Ladder Product for combo pricing
- Mounting hardware not included



## CUSTOM PRODUCTS



**WE SPECIALIZE IN MOBILE ACCESS PRODUCTS FOR SAFER OPERATIONS**

# WORK PLATFORMS

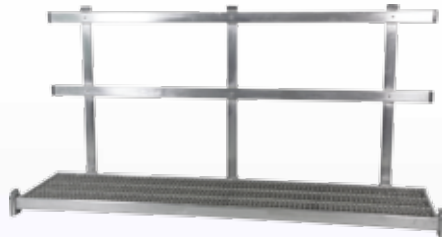


Our portable, all aluminum work platforms are ideal for extending your trailer's surface area for safe passage around stored materials and equipment and are perfect for safely loading or unloading trailers. Each platform option features CNC billet hooks which allow for easy mounting to the trailer's rub rail. Our handrail design helps prevent falls and is removable for easy storage. Combine with a Trucker Series ladder for safe, easy access.

## 8' WORK PLATFORM

#6500WP8

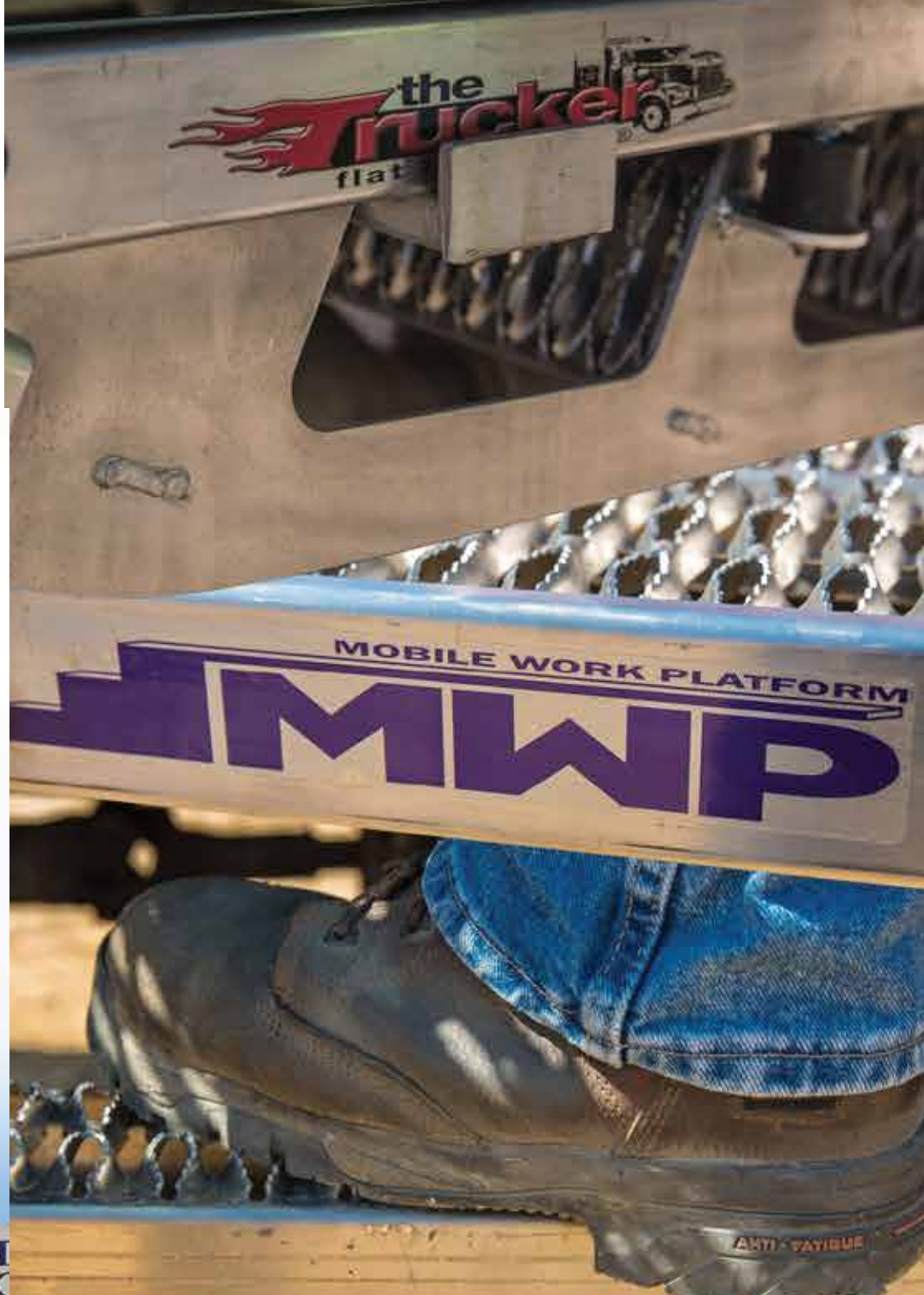
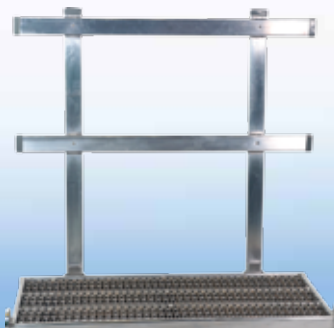
- ANSI Rating – 3-Man (3,000-lb) Capacity
- All Aluminum
- Slip Resistant Tread
- Removable Handrail
- Weight: 87-lbs
- Dimensions (Platform): 96" W x 21" D
- Dimensions (Handrail): 96" W x 42" H
- Additional Left & Right Handrails are available



## 4' WORK PLATFORM

#6500WP4

- ANSI Rating – 3-Man (3,000-lb) Capacity
- All Aluminum
- Slip Resistant Tread
- Removable Handrail
- Weight: 45-lbs
- Dimensions (Platform): 48" L x 21" D
- Dimensions (Handrail): 48" W x 42" H
- Additional Left & Right Handrails are available



INNOVATIVE ACCESS SOLUTIONS

## CONTACT

IAS is focused on delivering quality products and excellent customer service.

For all product inquiries, please contact:

(270) 230.0115  
COMPANY FAX LINE  
(270) 230-0174



PO BOX 4309  
200 JUDGE KENNETH GOFF DRIVE  
LEITCHFIELD, KY 42755

1-800-388-6884



PO BOX 4309  
200 JUDGE KENNETH GOFF DRIVE  
LEITCHFIELD, KY 42755

www.iascustom.com  
1-800-388-6884

WWW.IASCUSTOM.COM