

GATOR TAILGATE LADDER

PART #6705



Place the base plate onto the tailgate with the flanges down & the key slot running vertically. The plate should be approximately 1" from the front edge of the tailgate and 1 1/2" from the side edge of the tailgate.

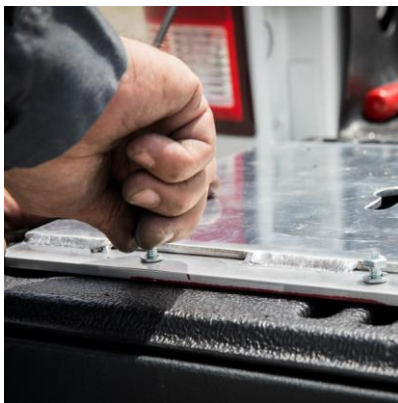
**Please note: if tailgate has a plastic bed liner it should be temporarily removed from installation area; rhino liners do not have to be removed.*



Locate & mark (6) hole locations on the Tailgate and on the Base Plate where the bolts will be located; (4) of the (6) locations are recommended to be in the ribs of the tailgate. Using a 7/16" drill bit, drill (6) holes in the Tailgate. Move the Base Plate to a safe drilling location, free from obstruction, and pre-drill the (6) holes with 1/4" drill bit.



Assemble (1) Jack-Nut, 1/4" Flat Washer, 5/16" Nut & 1/4"-20 Bolt. Insert jack-nut assembly into holes of tailgate. Using a 1/2" wrench on nut & 7/16" wrench on bolt head, hold 1/2" wrench & tighten bolt until tight - this will cause the jack-nut body to collapse to form legs which grip the inside of the mounting surface; leaving a permanent, reusable threaded insert. Un-screw flat washer, nut & bolt and repeat process for the remaining (5) holes.



Align pre-drilled Base Plate holes over newly installed jack-nuts in tailgate. Insert a 1/4" Lock Washer and 1/4"-20 Bolt using 7/16" wrench until tight into (6) jack-nuts.



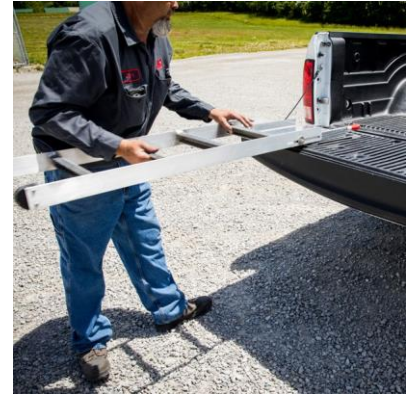
Align scribed arrow on top of Base Plate with scribed arrow on Swivel Plate to allow key on underside of Swivel Plate to drop into key slot of Base Plate. Rotate Swivel Plate placing slots over edge of tailgate to install ladder.



Place arms of Ladder over outside edge of Swivel Plate.

GATOR TAILGATE LADDER

PART #6705



**Handle can be installed on either side per your preference*.* Slide a 3/8" Fender Washer between the Ladder and Swivel Plate. Place a 3/8" Fender Washer on the 3/8-16 x 1 1/2" Bolt and from the inside of the Swivel Plate align the Handle over the bolt hole and insert the bolt & washer assembly thru the handle, Swivel Plate and slot of Ladder. Place a 3/8" Fender Washer & 3/8" Nylon Lock Nut on end of bolt and tighten until snug; but still allowing the ladder to slide in slot.

To store the ladder, lower the handle, raise the ladder level with tailgate and slide the ladder to the forward most position. Rotate the ladder 90 degrees to lay flat against the tailgate.

Install support bracket:

Align top hole of bracket with hole in ladder foot to determine placement. Bolt bracket to tailgate using (2) 1/4-20 jack nuts and (2) 1/4-20 x 3/4 bolts.



To use the ladder, rotate the ladder 90 degrees off the tailgate, aligning straight with the base plate. Slide the ladder completely out to the fully extended position & lower to the ground. Assure ladder is fully extended and snug to the ground. Raise handle & allow it to drop securely into the holding slot.

PARTS LIST

Item	Content	Qty	Tools Req'
1	Base Plate	1	Marker
2	Swivel Plate	1	Tape Measure
3	1/4-20 Jack-Nut	8	7/16" Drill Bit
4	1/4 Lock Washer	6	1/4" Drill Bit
5	1/4 Flat Washer	1	1/2" Wrench
6	5/16 Nut	1	7/16" Wrench
7	1/4-20 x 1 1/2 Bolt	6	9/16" Wrench
8	Ladder	1	7/32" Allen Wrench
9	3/8 Fender Washer	6	Drill
10	3/8-16 x 1 1/2 Bolt	1	
11	3/8-16 x 1 1/4 Bolt	1	
12	3/8 Nylon Lock Nut	2	
13	Handle	1	
14	1/4-20 x 3/4 bolt	2	
15	Locking Pin with Wire Retainer	1	
16	Stowed Ladder Support Bracket	1	