

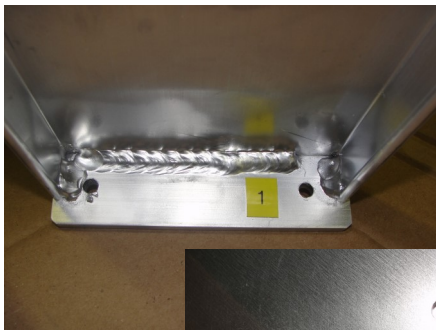
Assembly Instructions for:

# Dog Step, part#8900

Aluminum Marine Ladder for Pets



Tools needed: One 7/16" wrench and One 5/32" Allen wrench, Cordless drill and 1/4" wood drill bit



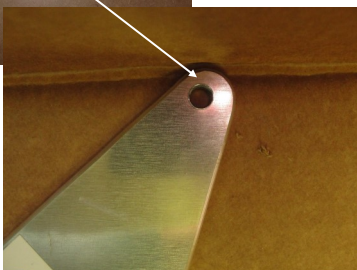
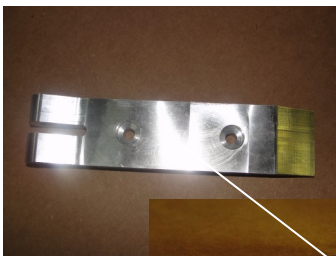
1. Match the numbered end of the step with the corresponding numbered side panel. Using the 1/4" x 1" bolts, place one (1) through each hole starting at the outside of the side panel and going through to the under-side of the step. Using the allen wrench on the head of the bolt, firmly secure with a 1/4" nut using the wrench to tighten.



2. Repeat this step on both sides until all 3 steps are secure.



3. Secure one (1) rubber bumper screw on each side in the adjustment block in the desired slot to stabilize the unit against your dock.



4. Place one (1) mounting bracket at the top of the side panel so that the hole in the top of the side panel is in the slot at the end of the hook. Insert a 1/4" x 2" bolt into the inside hole of the bracket, through the side panel, and out the outside hole of the bracket. Firmly secure with a 1/4" nut using the allen wrench and 7/16" wrench.

Assembly Instructions for:

## Dog Step, part#8900

Aluminum Marine Ladder for Pets



5. While someone holds the ladder in place in an upright position on the dock with the rounded end of the mounting bracket slightly over the edge, drill holes into the dock through the pre-drilled holes in the brackets. Attach to the dock using 1/4" x 3" bolts, washers, and lock nuts.



<Stored flat on Dock

Pivots into water



<Easy water access for any pet